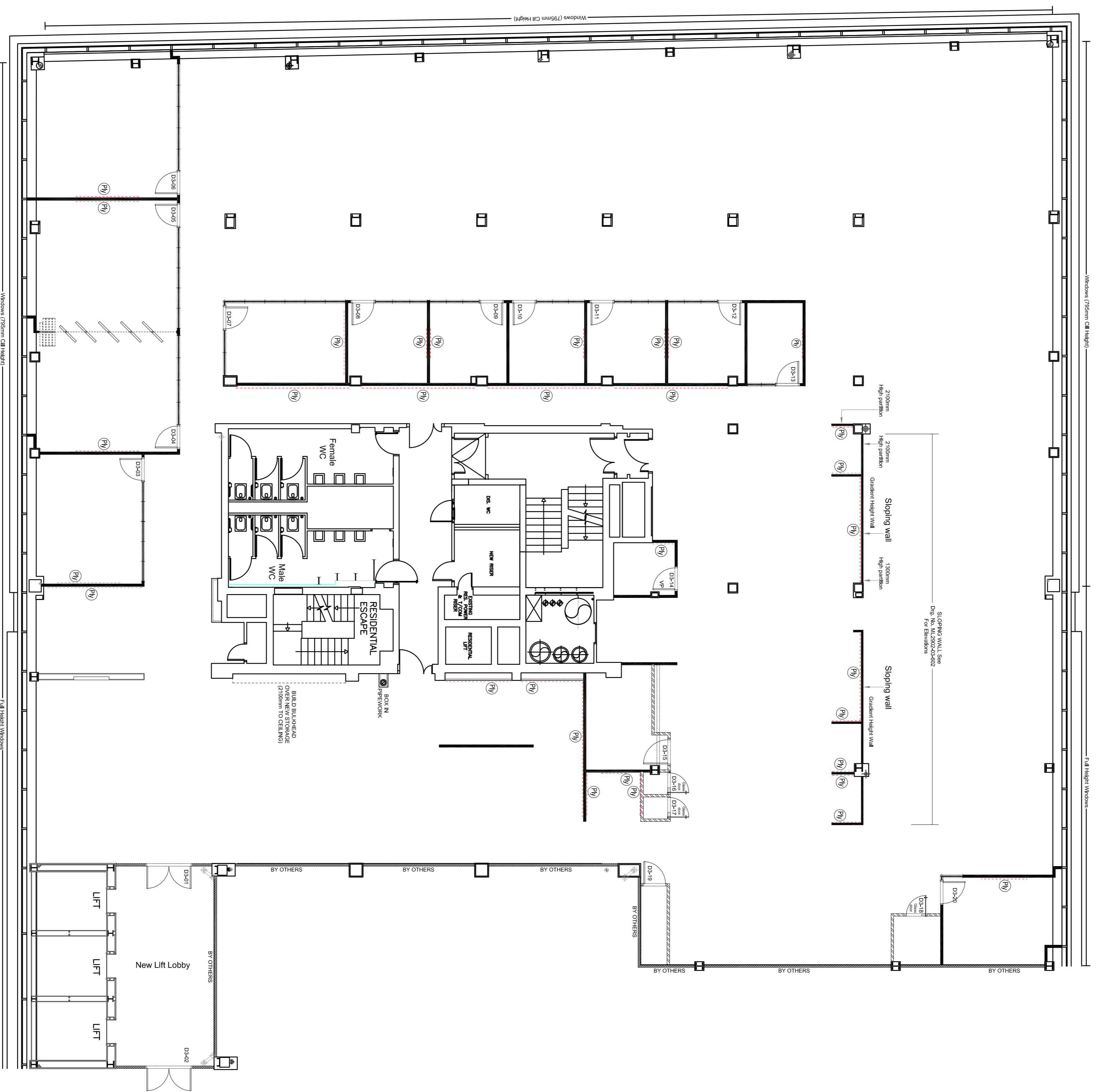
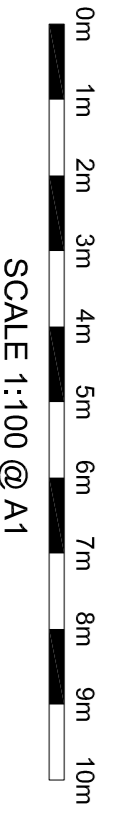


This drawing is protected under Copyright and at no time must any portion of this drawing be reproduced or copied in anyway without the permission of Morgan Lovell.
All dimensions must be checked on site and NOT scaled from this drawing.



- Legend:
- 100mm Solid partition, 2 layers plasterboard 50mm "C" stud with insulation quilt.
 - 100mm Single glazing up to 1.5m of downward of 2200mm. Multi-paneled required as standard elsewhere, where applicable.
 - 132mm Solid partition, Sals to sals, 2 layers plasterboard, 70mm "C" stud with insulation quilt.
 - 100mm Solid partition, 1 layer plasterboard & 1 layer acoustic board, 50mm "C" stud with insulation quilt. Ft. up to 2200. Fabric ceiling over, with mineral lagging to suit.
 - 50mm Over-sounding - to live wall.
 - Solid inner door to suit of down-stand bulkhead of 2200mm (or 2100mm for 03-19), Lever handles - SIS.
 - F14 Glass door to suit of down-stand bulkhead of 2100mm, Lever handles - SIS.
 - Replicate 1 layer plasterboard with 2x fix keags.
 - 03-01 Door numbers



Rev	Description	By	Date
AB	AS BUILT	ML	03 OCT 18
RECORD DRAWING			

Morgan Lovell

16 Noel Street London, W1F 8DA
T: 0207 734 4488 F: 0207 734 2888 E: contact@morganlovell.com
W: <http://www.morganlovell.com>

Client
Camelot Global

Project
3rd Floor - North Side
101 New Cavendish Street
London
W1W 6XH

Title
3rd Floor
Partition Settingout / Details

Scale: 1:100 @ A1
Date: May 2018
Designer/Drawn By: KLCP
Checked By / Date: LR-05/18

Drawing Number	Floor	Drawing No.	Rev
ML2902	03	101	AB